

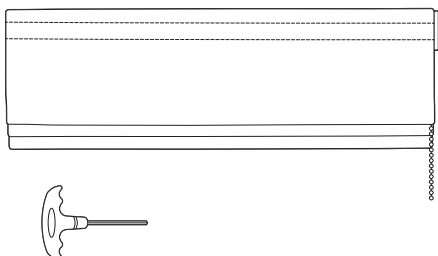
ROMAN BLIND

FITTING INSTRUCTIONS

NO DRILL HEADRAIL

The installation of this product should be conducted by someone competent in DIY. Please read the instructions before installing or operating this product. If in doubt, consult a professional.
Please take care when unpacking your blind, do not use a knife or any sharp object.

IN THE BOX

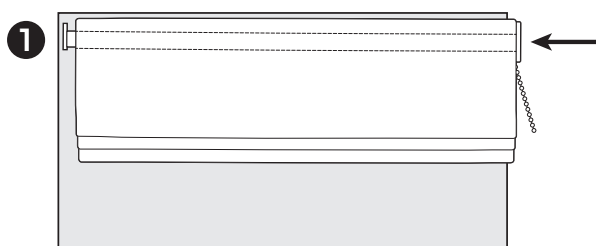


ROMAN BLIND
LOCKING KEY

FITTING YOUR BLIND

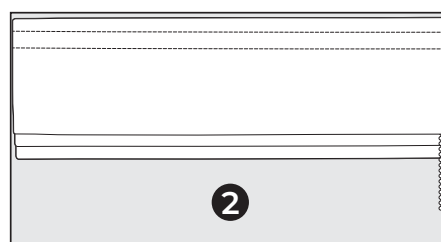
Before you start, ensure your wall is made from a suitable substrate. If your recess will move when a force is exerted against it, for example plasterboard with nothing behind it, then this will not be suitable for the no drill system.

STEP 1



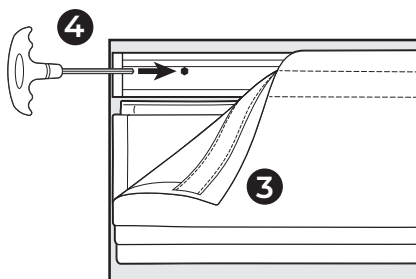
Place the plunger side into your recess. Push against the plunger to depress it and ease the other end of the blind into your recess.

STEP 2



Position your blind in the desired position within your recess. Ensure the blind is far enough away from any obstructions before tightening the locking mechanism.

STEP 3



On the plunger end, detach part of the fabric from the headrail. Place the locking key supplied with your blind into the hole in the headrail.

STEP 4

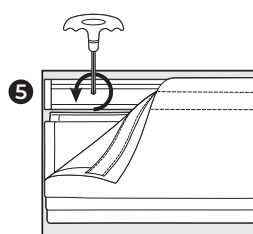


FIG.1

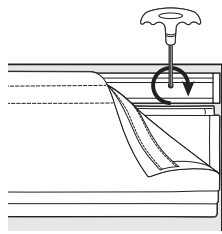
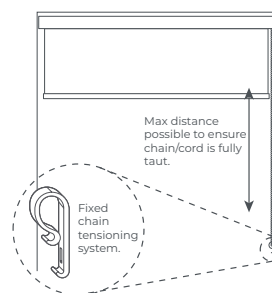


FIG.2

Gently turn the locking key towards the wall until you hear a click. Do not continue to turn the locking key after you hear the click, as you may damage the locking mechanism. Note: if the plunger is on the left hand side (Fig.1) turn anticlockwise. If the plunger is on the right hand side (Fig.2) turn clockwise.

STEP 5



Make sure the chain is inside the P-Clip. Peel off the adhesive and stick the P-Clip firmly to the wall, ensuring that it is installed at the maximum distance possible from the control mechanism to ensure the chain remains taut.

REMOVING YOUR BLIND

Detach the fabric from the headrail. Place the locking key into the hole. Turn away from the wall to unlock the mechanism. Once suitably unlocked, push towards the plunger end and ease your blind out of the recess.

MAINTENANCE

If your window is exposed to high humidity or direct sunlight, occasionally check your blind and tighten if required. We recommend checking your product regularly to ensure no components have been damaged and that your blind operates smoothly.

To clean your blind: use a dry lint free cloth to wipe over the fabric of the blind.

WARNING

Young children can be strangled by loops in pull cords, tapes and inner cords that operate the product.

To avoid strangulation and entanglement, keep cords out of reach of young children. Cords may become wrapped around a child's neck. Move beds, cots and furniture away from window covering cords.

Do not tie cords together. Make sure cords do not twist and create a loop.

