



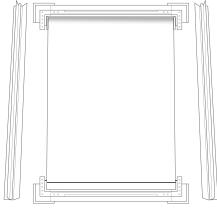
PERFECT FIT ROLLER BLINDS

THE INSTALLATION OF THIS PRODUCT SHOULD BE CONDUCTED BY SOMEONE COMPETENT IN DIY.

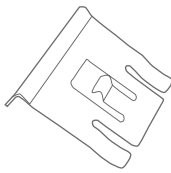
YOU SHOULD HAVE

PERFECT FIT ITEM LIST

Perfect Fit
Frame and
Blind



Brackets



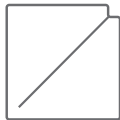
or
Konnect
Magnetic Strip



Alcohol Wipe



Cover Caps



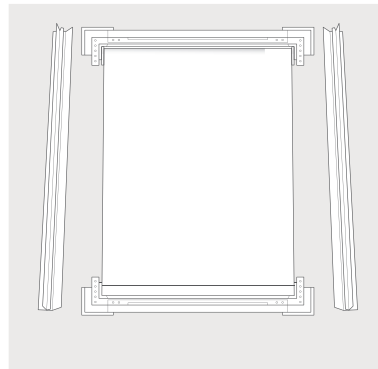
STEP 1

PUT THE FRAME TOGETHER

1.1

Lay all parts of the frame/blind out face down on a clean even surface.

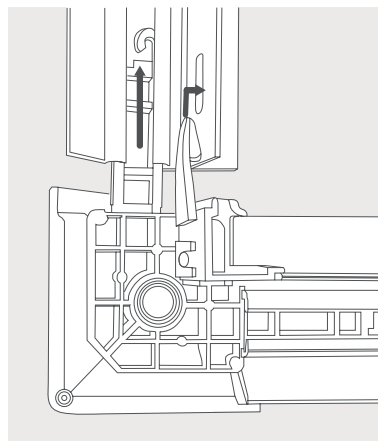
Your blind will be attached to the top part of the frame.



1.2

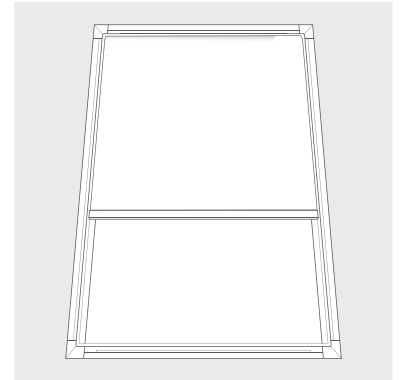
Slide the left-hand side of the frame on the bottom left-hand corner joint until the latch is secured inside the hole. Repeat the process on the top left hand corner joints. Press cover caps into corner joints.

Follow the same procedure for the right-hand side of the frame ensuring cords do not become trapped.



1.3

Your Perfect Fit frame and blind are ready to fit.



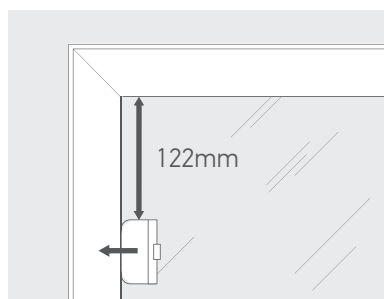
STEP 2 - FITTING OPTION (BRACKETS)

ATTACH THE BRACKETS

2.1

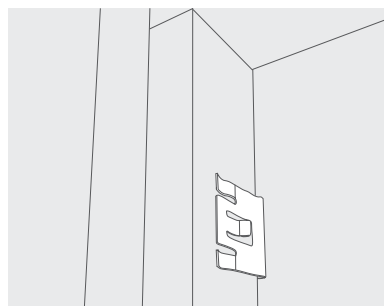
You need to push the brackets between your window pane and the rubber window seal. The brackets need to be lined up with the bracket hole positions on the Perfect Fit frame.

Top brackets are positioned approximately 122mm from the top. Measure the distance from the edge of the rubber seal as shown.



Press the flat edge of the bracket underneath the window seal. Bracket should be placed with the small tab facing outwards.

TIP: If you find that the brackets are difficult to place behind the window seal, you can use washing up liquid as lubricant on the flat part of the bracket. Once all the brackets are fitted, clean any excess from the window surface.

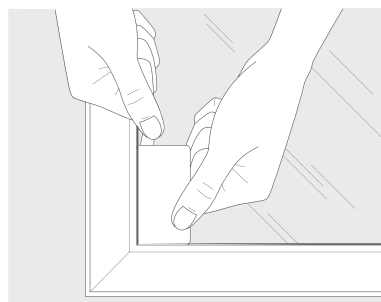


2.2

Bottom brackets are positioned approximately 85mm from the bottom. Measure the distance from the edge of the rubber seal.

TIP: You can use a credit/debit card as a template to find the correct position for bottom brackets. Place the card length ways along the side of the window in each bottom corner, and line up the bracket with the end of the card as shown.

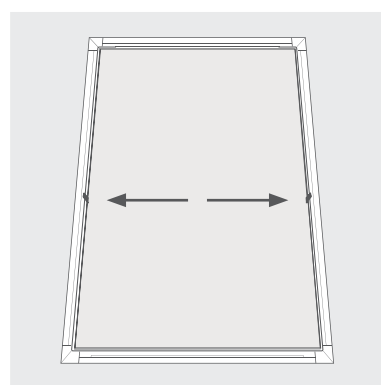
Fit bottom brackets underneath the window seal as in previous step.



Ensure that the brackets are aligned with the holes in the Perfect Fit frame.

2.3

Fit any intermediate brackets accordingly. Two extra brackets will be supplied for the blinds over 1100mm drop. These should be positioned approx. mid way down the drop of the blind, one on each side. These need to be lined up with the bracket hole positions on the Perfect Fit frame.



(KONNECT)

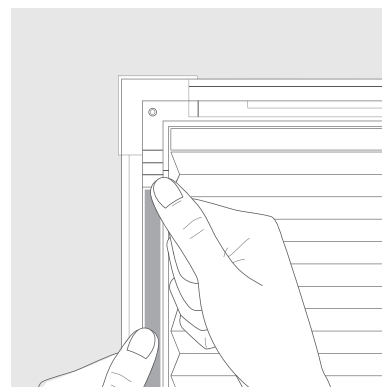
ATTACH THE MAGNETIC STRIP

2.1

TIP: Ensure the area where the magnetic strips are to be applied is clean of dirt and grease. Use the alcohol wipe included to clean surface.

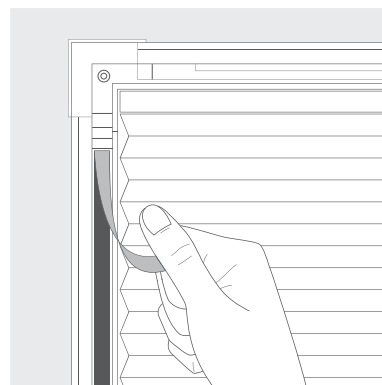
Remove the paper from one side of the magnetic strip exposing the adhesive layer and position along all 4 sides on the back of the blind frame.

Add the other lengths of magnetic strips to the already applied ones. Ensure north/south polarity is correct. If strip keeps moving off centre, the strip should be rotated 180 degrees.



2.2

Remove the remaining paper tape to expose the adhesive layer to install the blind.

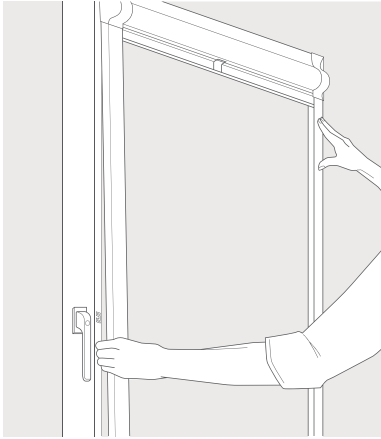


STEP 3 (BRACKETS)

ATTACH THE FRAME & BLIND TO THE WINDOW

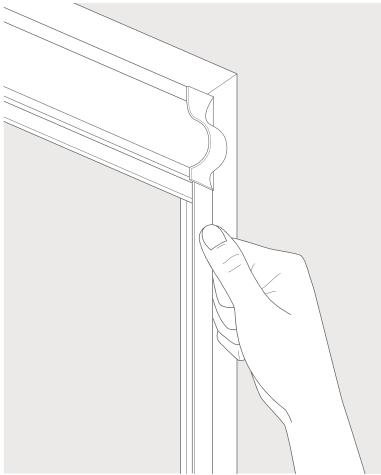
3.1

Line up the holes in the Perfect Fit frame with the brackets.



3.2

Firmly press the frame onto each bracket one side at a time.



Your frame and blind are now installed.

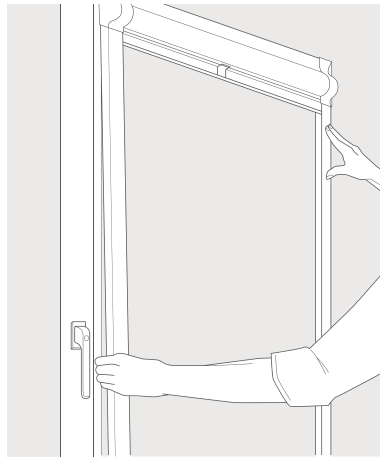
(KONNECT)

ATTACH THE FRAME & BLIND TO THE WINDOW

3.1

TIP: Before applying to the window frame, clean the edges of the window with an alcohol wipe before attaching the blind.

Line up the Perfect Fit frame with the window and firmly push the frame into position. Ensure the Konnect strips are stuck to the window.

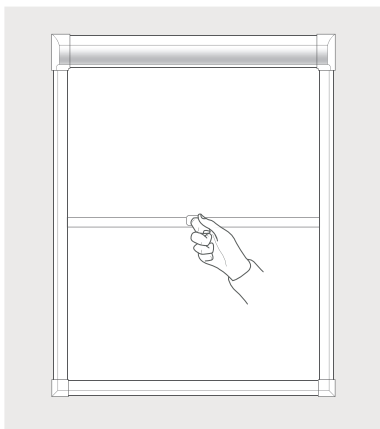


Your frame and blind are now installed.

PLEASE READ THE INSTRUCTIONS BEFORE OPERATING THIS PRODUCT

OPERATION INSTRUCTIONS

TENSION CONTROL



To raise & lower the blind: Simply raise and lower the blind to the desired position by firmly holding the handle. Rotate the bottom bar to lock it into position.

MAINTENANCE

The product is maintenance free, however we recommend that regular visual checks are completed to ensure that no components have been damaged, which could result in operating difficulties and/or cause a safety risk.

If any maintenance is required, we recommend that the work is carried out immediately by a reputable blind company.



**make it
safe**TM

BBSA[®]
BRITISH BLIND & SHUTTER ASSOCIATION

WARNING

Young children can be strangled by loops in pull cords, chains, tapes and inner cords that operate the product.

To avoid strangulation and entanglement, keep cords out of the reach of young children. Cords may become wrapped around a child's neck. Move beds, cots and furniture away from window covering cords.

Do not tie cords together. Make sure cords do not twist and create a loop.

